

Hard iron, raw rust: With ADLER step by step for stronger effect

Hard iron, raw rust, the architectural trends have also arrived indoors and in the living room—and we know that one should strike while the iron is hot. ADLER has therefore created an effect for joiners and furniture manufacturers, that brings real iron onto wood. Those who like it still cruder, can even leave it to rust overnight—simply with the spray gun. ADLER application engineer Stefan Oberladstätter shows how it's done.

📅 11.02.2016

Products used



PUR-Spritzfüller



Aquafix Ferro



Aquafix Oxid



Pigmotop



PUR-Antiscratch HQ

Steps



Step 1 - Prepare

A good base is important: The substrate should be well prepared. That is a spray application of **PUR-Spritzfüller Schwarz** (Black).



The filled, dry substrate should then be sanded directly with grit 240 before painting.



Step 2 – Mix iron paint

For the ADLER Eisenlack (iron paint), 400 g of **Aqua-Pure Metall**, 5% of **Aqua-PUR-Härter** (hardener) and all of 1000g **Aquafix Ferro** are mixed. Careful stirring is the secret here!

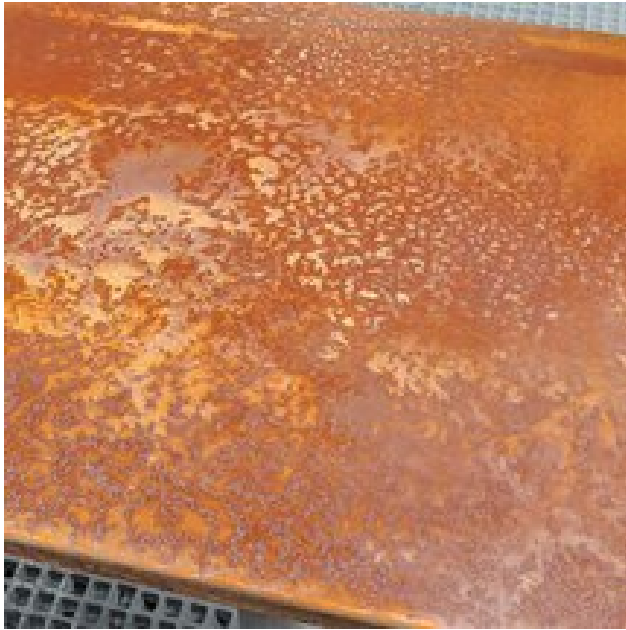
Aquafix Ferro is so heavy because it contains real iron in it. This makes the ADLER real iron effect very authentic.

The best results can be obtained with a single, rich application (about 500 grams per square meter) with the compressed air cup gun.



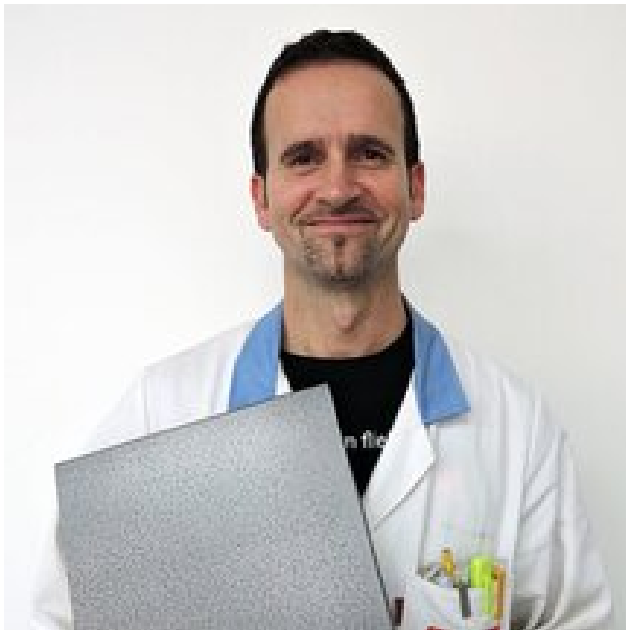
Step 3 real iron effect – application of top coat

Now you just have to allow it to dry for five hours, gradually sand it with grit size 220, 400, 600, 1000 and 3000 and recoat it once with a lightfast 2-component PUR paint. Stefan Oberladstätter recommends **ADLER Pigmotop** in gloss level 70.



Step 4 – rust overnight, apply the top coat

Genuine iron gives real rust—thanks to **Aquafix Oxid** even overnight. Lastly, a topcoat can be applied again with a lightfast PUR paint. Stefan Oberladstätter uses extremely matt **PUR-Antiscratch**.



Step 5 – show off

The work is done, the piece of furniture has a real iron or rust surface.

Now there is nothing else to do but let yourself be admired that as a joiner you can even defy the laws of nature and easily transform wood into iron.

Products to give a real iron effect:

- ADLER PUR-Spritzfüller Schwarz
- ADLER Aqua-Pure-Metal
- ADLER Aqua-PUR-Härter
- ADLER Aquafix Ferro
- ADLER Pigmotop G70

additional for rust effect:

- ADLER Aquafix Oxid
- ADLER PUR-Antiscratch HQ G5

Title

