

FURNITURE & INTERIOR FITTINGS

A bold, distinctive character for striking wooden surfaces

Raw, elegant and full of depth, the Burnt Wood effect lends wooden surfaces a striking appearance. Inspired by naturally charred wood, it creates surfaces with a strong character – intensely textured, darkly pigmented and, at the same time, finished to a high standard. The grain is impressively highlighted through targeted texturing and a multi-layered construction. Rich black tones, subtle highlights, as well as cracks and depth create an authentic burnt effect. The result is a surface that not only impresses visually but can also be experienced through touch.

Elegance with a mineral character

The Burnt Wood – Ash variant combines subtle shades of black with calm, mineral tones. The surface appears as if marked by time: understated, elegant and with an exceptional sense of depth – ideal for striking furniture, wall cladding or interior fittings with a focus on design.

The material

Specifically coordinated ADLER products are used to achieve this effect:

- **Aduro Legnopur G10** – as a base and top coat
- **Pigmopur G50** black – for intense pigmentation
- **Aduro Crackle Effect** – to create the characteristic burnt-crack appearance

📅 21.04.2026

Products used



Aduro Legnopur



Pigmopur G50



Aduro Crackle-Effect Base

- **Arova Dirty Effect** black – to enhance the sooty, burnt look

Also required:

- Metal wire brush
- Anderlon brush
- Sanding sponges (incl. K220)



Arova Dirty-Effect



PUR-Hardener 8419

Steps



Step 1: Preparing the wood surface

The raw wood surface is heavily brushed with a metal wire brush to clearly highlight the grain. Then brush with an Anderlon brushbürstenbürsten to remove loose wood fibres and smooth out the texture.



Step 2: Levelling and preparing the substrate

Smooth the surface using an abrasive sponge, working across the grain, and remove all sanding dust. Thenß apply one generous coat of **Aduro Legnopur G10** as a Primer coat. Allow to dry in accordanceäß with the technical specifications.



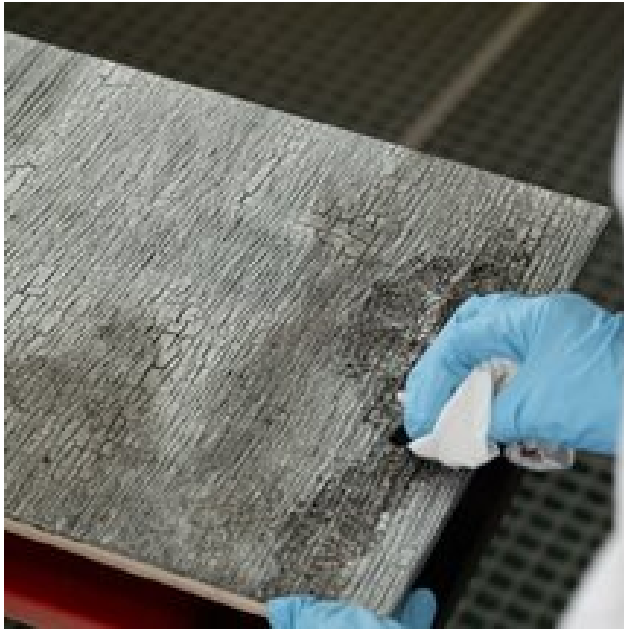
Step 3: Intermediate sanding & Pigmentation

Once dry, give the surface an intermediate sanding with a K220 sanding sponge. Then apply one generous coat of **Pigmopur G50** black to create depth and an intense burnt effect. Leave to dry for approx. 60 minutes.



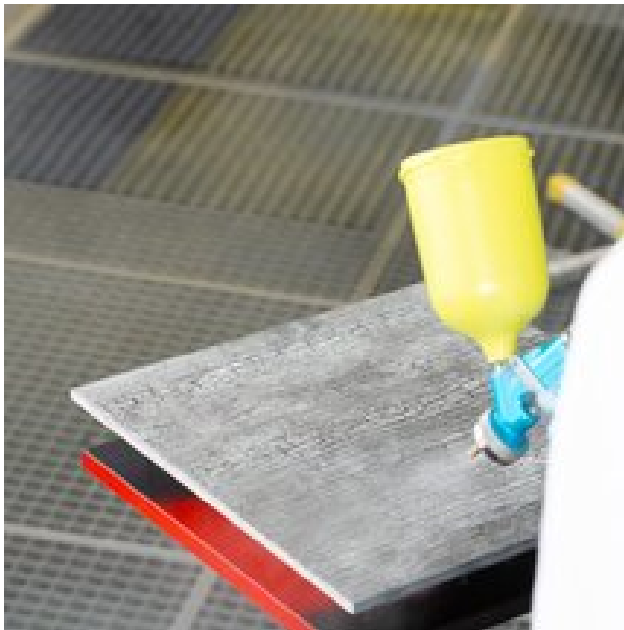
Step 4: Create a crackle effect

The **Aduro Crackle effect** should be applied even. Thenß allow the surfaceäche to dry thoroughly overnightändig, so that the characteristic crackle effect can develop to its full potential.



Step 5: Strengthen the brand identity

The **Arova Dirty Effect** in black, which can be thinned with water, is applied using a dabbing motion. This creates an authentic, rustic look that enhances the appearance of burnt wood. Drying time: approx. 60 minutes.



Step 6: Protection & Finishing

The final step is to apply a top coat of **Aduro Legnopur G10**. This sets the effect and gives the surface a resistance and a high-quality feel.



The result:

The Burnt Wood effect in Ash impresses with its deeply textured surface, fine black grains and a calm, mineral-like appearance. The authentic burnt character gives the wood a powerful yet elegant look – perfect for sophisticated design applications.

Title

