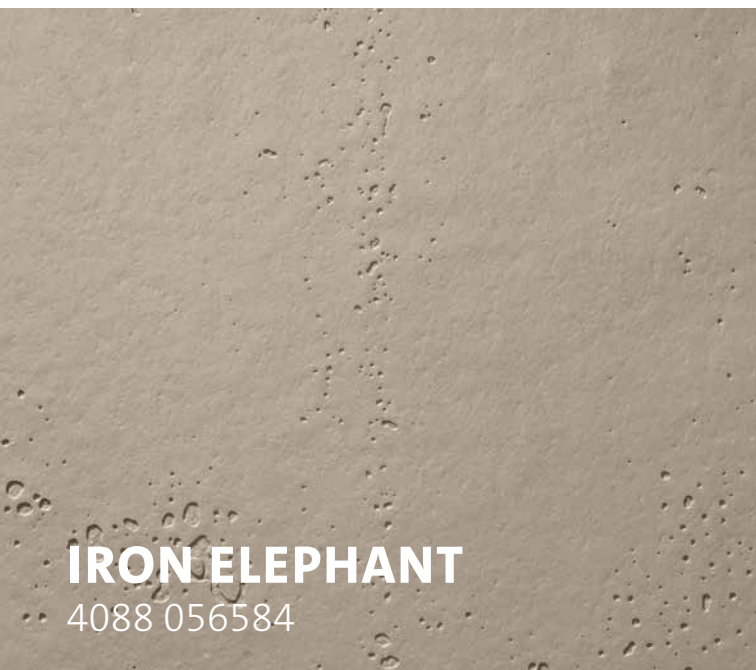
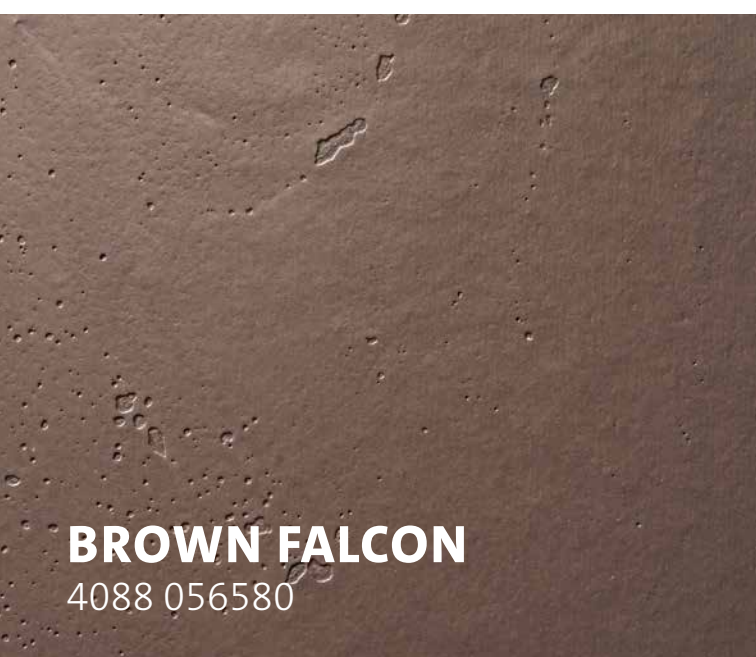


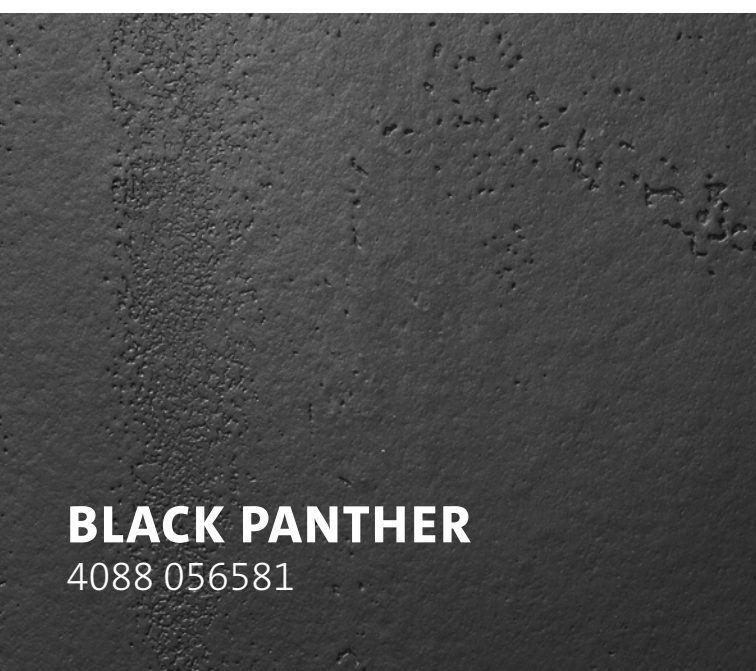
THE SPRAYABLE CONCRETE



IRON ELEPHANT
4088 056584



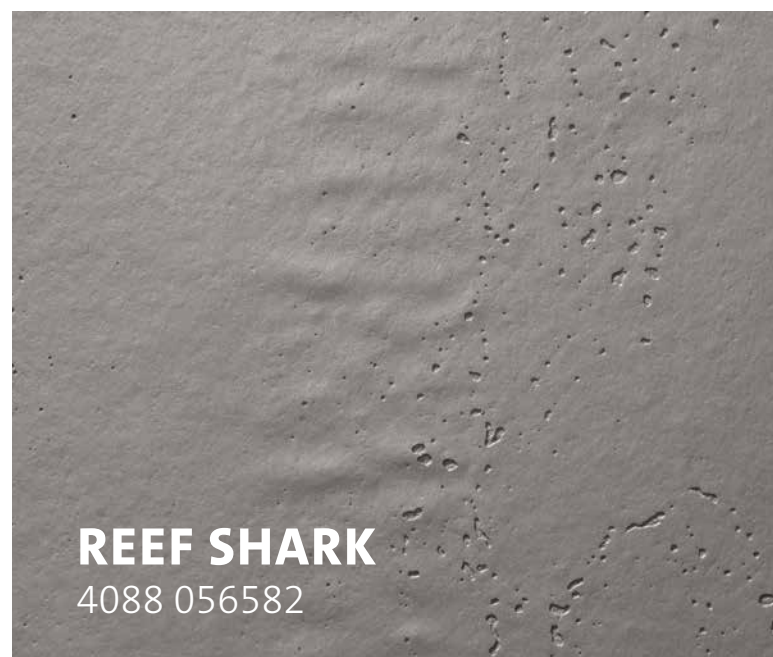
BROWN FALCON
4088 056580



BLACK PANTHER
4088 056581



WHITE WOLF
4088 056579



REEF SHARK
4088 056582



SNOW LEOPARD
4088-056583

Colour differences to the original shade are due to the printing process. To evaluate the final result, it is necessary to make a sample on an original substrate.



Paint runs through our veins.

Over 85 years ago, Johann Berghofer laid the foundations for ADLER and started to develop his own paints and varnishes. Much has changed since that time, but one thing has remained the same: our passion for paint, which drives us day after day to work on the perfect surface coating.

Paint runs through our veins.



facebook.com/adlerlacke



instagram.com/adlerlacke_official



youtube.com/AdlerLacke

ADLER-LACKE.COM

ADLER-Werk Lackfabrik · A-6130 Schwaz/Tirol · Bergwerkstraße 22 · T. +43 5242 6922-0 · info@adler-lacke.com

ADLER Deutschland GmbH · Kunstmühlstr. 14 · D-83026 Rosenheim · T. +49 8031 304 5174
ADLER Lack AG · Etzelstraße 5 · CH-8856 Tuggen · T. +41 55 465 2121
ADLER Polska Sp. z o.o. · ul. Tyniecka 229 · PL-30-376 Kraków · T. +48 12 252 4001
ADLER Slovensko s.r.o. · Montážna 3 · SK-971 01 Prievidza · T. +421 46 5199 621

ADLER Česko s.r.o. · Pražská 675/10 · CZ - 642 00 Brno - Bosonohy · T. +420 731 725 957
ADLER Italia S.r.l. · Via per Marco 12/D · I-38068 Rovereto · T. +39 0464 425 308
ADLER Benelux BV · De Boelakkers 12 · NL-5591 RA Heeze · T. +31 85 064 2020

9979601
08-2022



Bluefin Pure-Concrete
The sprayable concrete



BLUEFIN PURE-CONCRETE

THE ROUGH ELEGANCE

Everyone wants to make their home special – surfaces with style and that certain something are sought-after. This is ensured by the new Bluefin Pure-Concrete: The sprayable concrete with its characteristic reinforced concrete appearance conveys a rough elegance, which is also reflected in its colour designations: Black Panther, Iron Elephant, Brown Falcon, Reef Shark, Snow Leopard and White Wolf mean that every piece of furniture is unique!

YOUR ADVANTAGES

- Authentic concrete surface
- High usability, perfectly suitable for the kitchen and living area
- Easy and efficient to use
- Extremely viscoplastic due to modern fibre technology
- High chemical resistance: 1B-resistance according to ÖNORM A 1605-12.1 and DIN 68861 through ADLER Bluefin Top-Antiscratch

Step by step to the ELEGANT CONCRETE SURFACE



PRIMING

Apply the Aquafix Concrete mixture to the surface using a pressure cup gun (nozzle 2.2 mm) or a low-pulsation diaphragm pump with circulation device. Optimum application rate: 400 – 500 g/m². Let the surface dry at 20° Celsius for approx. 4 – 5 hours.

PREPARATION

Raw MDF boards are recommended as the substrate for the concrete effect. Before priming, the surfaces are sanded with 150 grain. First apply the Bluefin Pure-Concrete tinted to one of our six standard shades (35 parts by weight). For a perfect mixture without impurities, mix Aquafix Concrete Natur (100 parts by weight) well with a disolver or paint stirrer.



APPLY THE FOIL

Immediately after application, a PE foil is applied to the wet surface and pressed on with a smoothing trowel. The cavities, which are characteristic of concrete, are created by air inclusions under the film. Depending on personal preference, the concrete effect can be smoother or more wavy. As a general rule, the more precisely the enclosed air is stripped out under the film, the smoother the effect. **Let the surface dry overnight!**



SEALING | TOPCOATING

The newly created concrete effect surface can now be topcoated. First seal the surface with the Bluefin Primer-Concrete + 10 % Aqua-Hardener 8451 (Hardener; Application rate: 100 – 120 g/m²), which prevents the chalking of cement when exposed to water. Give your surface another 3 hours to dry and apply 80 g/m² of Bluefin Top-Antiscratch G05 + 10 % Aqua-Hardener 8451 (Hardener) as the final step.



REMOVE THE FOIL

Peel off the foil carefully the next day and blow off the surface again with compressed air. Allow the workpiece to breathe for 4 – 5 hours.

For more detailed processing information, please refer to the technical data sheet Bluefin Pure-Concrete.

PRODUCTS AT A GLANCE

ARTICLE NUMBER

White Wolf	4088 056579
Brown Falcon	4088 056580
Black Panther	4088 056581
Reef Shark	4088 056582
Snow Leopard	4088 056583
Iron Elephant	4088 056584

CONTAINER SIZES

4,55 kg

ADDITIONAL PRODUCTS

ADLER Aquafix Concrete Natur	8140 000301
ADLER PUR-Ecofill	25501
Bluefin Isospeed	3134 000010
Bluefin Primer-Concrete	4081 000200
Bluefin Top-Antiscratch G05	2960 000105
ADLER Clean-Möbelreiniger	96490

APPLICATION AREAS

For the coating of furniture and interior finishing exposed to normal levels of stress, such as bedroom and living room furnishings including kitchen fronts: application areas III-IV in accordance with ÖNORM A 1610-12. Application in combination with a suitable topcoat system.

RECOMMENDED SUBSTRATE

MDF boards or filled carrier plates



ADLER
Paint runs through our veins.