



**THE FUTURE BELONGS
TO WATER-BASED
COATINGS**



Paint runs through our veins.

Bluefin water-based coatings

PRODUCT CATALOGUE

LET'S SET
THE COURSE
FOR A **BETTER**
FUTURE!



CONTENTS

ADLER. A name that promises success	4
Water-based coatings: the status quo	8
Better with water	12
Why choose ADLER water-based coatings?	14
Certifications & our sustainable label "green"	16
ADLER and their range of water-based coatings for furniture	18
Clear varnishes	24
Pigmented paints	30
Primers	34
Fillers	37
The demands of the future	39

ADLER. A name that promises success



Paint runs through our veins.

THIS IS THE PHILOSOPHY THAT HAS LED TO ADLER BECOMING AUSTRIA'S LEADING MANUFACTURER OF VARNISHES, PAINTS AND WOOD PRESERVERS.

Around 21,000 tonnes of paint and varnish, including around 14,280 tonnes of water-based coatings, leave the paint factory in Schwaz each year and are dispatched to customers in over 30 countries worldwide. 120 employees working exclusively in Research & Development show how important progress and the spirit of innovation are to ADLER. Every year, ADLER invests 10% of their total sales revenues into research activities. As well as drawing on their in-depth professional expertise, you can also benefit from the fact that ADLER have their own in-house application technology centre with a state-of-the-art fleet of machinery to ensure that your processes run smoothly. Tailor-made coating solutions which can be adjusted to suit a wide range of different production processes underline the importance of ADLER's personal contact with customers and their one-to-one consultations.

ADLER see innovation and sustainability, the best possible quality and optimal service as the key factors in ensuring the continuation of their success.

21,000 tonnes of paints and varnishes/year, including

14,280 t
water-based coatings

730
passionate employees

120
employees working in Research & Development

ADLER. A pioneer

As far back as the nineteen seventies, ADLER was one of the first paint manufacturers to recognise the potential of water-based coatings to achieve a positive ecological balance and develop a sustainable coating process. As a pioneer in this field, ADLER has been working ever since on the further development of their range of water-based coatings in an attempt not only to meet the requirements of trade and industry, but in fact to exceed them. Nowadays, ADLER produces two-thirds of their products using a water base. Furniture varnishes and paints, stains, window and door coatings, wood preservers and wall paints. All these products are carefully tested before being introduced onto the market to ensure that they satisfy ADLER's high quality standards.

Quality, a responsible approach to doing business and social responsibility are not things that ADLER simply pays lip service to. As is proven by their countless awards and certifications, for which the coatings factory regularly undergoes strict inspections.

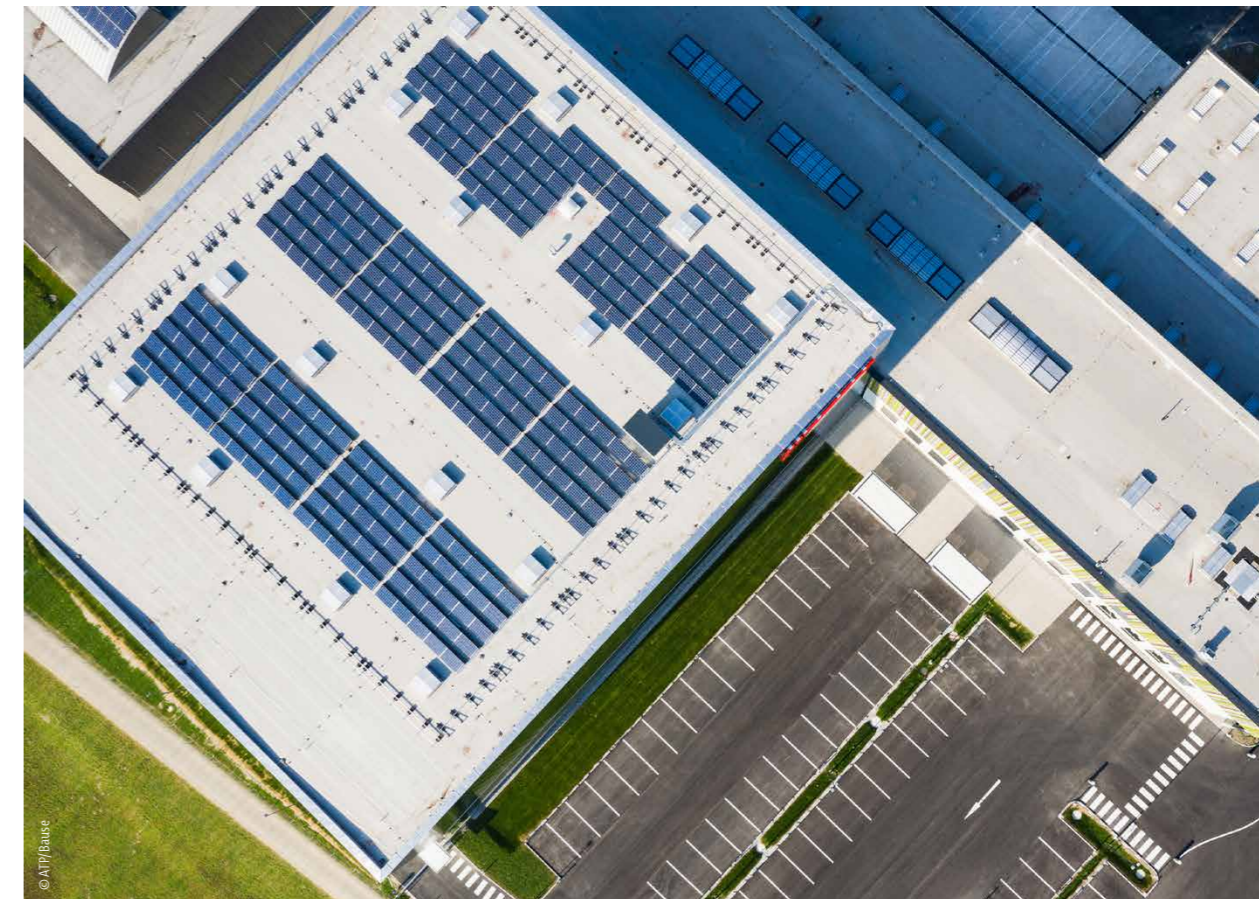


VIDEO
 Water-based
 coatings factory



With the official opening of the most advanced water-based coatings factory in Europe in 2019, ADLER heralded in a new era. With this investment, the company sent out a clear signal in favour of their water-based paint strategy and a sustainable future. With the construction of their new water-based coatings factory, ADLER have shown that, despite increasing production quantities, energy consumption can still be kept at a very low level. By actively taking responsibility in this way, ADLER are one of the first companies in their sector whose operations are 100 % climate-neutral*.

*ADLER has been able to reduce its carbon footprint to a minimum through a wide range of measures. ADLER offsets any unavoidable residual emissions through the purchase of recognised climate protection certificates, thereby helping to finance new climate protection projects.



Water-based coatings. The status quo

In recent years, the demand for water-based coatings has grown steadily – not least on account of stricter requirements on the part of government authorities. The European Union in particular is increasingly backing the manufacture and use of water-based coatings as a **response to concerns related to environmental protection and health**. In comparison to solvent-based coatings, water-based coatings have a significantly lower VOC (volatile organic compounds) content. This not only has a positive effect on the ecological balance and on human health, it also makes water-based coatings safer in terms of fire prevention.

Directive 2004/42/EU issued by the European Parliament and the Council on 21 April 2004 (Guidelines for Decorative Paints & Varnishes) restricts the use of solvent-based paints and varnishes on certain parts of buildings, e.g. stairs, windows and panelling.

The Austrian Solvents Directive LMV 2005 and the 31st German Federal Emissions Control Directive (BImSchV) regulate the **emissions of volatile organic compounds** and in doing so restrict the use of solvent-based coating systems.

In Germany, the restrictions apply from a quantity of 5,000 kg of solvent emissions per year, and in Austria from 500 kg per year. Larger companies are therefore increasingly switching over to water-based coatings. The German furniture and kitchen industry has already changed over almost completely to the use of modern water-based coating systems. This is also very much in line with the requirements of more discerning customers: with a natural and sustainable raw material like wood, customers want to be able to apply a high-quality finish using environmentally friendly paints and varnishes.



Water-based coatings



SOLVENTS
WATER
SOLIDS

PUR coatings



SOLVENTS
SOLIDS

ORGANIC SOLVENTS

versus

WATER



crude oil extraction



NO crude oil extraction
Natural water from springs and deep wells

via pipelines to the port



NO transport via pipelines

via oil tanker to Trieste



NO transport by oil tanker

via pipeline to the oil refinery



NO transport to the oil refinery

crude oil distillation



NO distillation

transport by oil tanker to production site



NO transport

manufacture of coatings



ENVIRONMENTALLY FRIENDLY manufacture of coatings

transport to the customer



transport to the customer

using the paint/varnish



using the paint/varnish in an **ENVIRONMENTALLY-FRIENDLY WAY**
water used for thinning and cleaning equipment

disposal



disposal

Wood, as a natural, renewable raw material, should also be protected in a sustainable way!

This is made possible by water-based coatings as they are more environmentally friendly and help to maintain the ecological balance due to their much lower solvent content.

By replacing organic solvents with water, the impact that paints have on the environment is reduced by approx. 90%.

In this overview we compare the solvent base of conventional, solvent-based lacquers and that of water-based coatings, thereby demonstrating the positive effects of water-based coatings throughout the entire life cycle of the product. Of course solvents also could be obtained from organic waste, a process that is less damaging to the environment.

Better with water

The quality of water-based coatings is in no way inferior to that of solvent-based coatings. This applies in equal measure to luminance and to mechanical and chemical resistance, and consequently to the fitness for purpose of the resulting surfaces. The trend for more natural surfaces in particular makes a strong case for the use of water-based coatings. With their lower level of grain accentuation, they result in a more natural-looking surface, as the natural colour of the wood is to a large extent retained.

Water-based coatings...

- ✓ are the future, allowing us to safeguard our grandchildren's futures
- ✓ make an important contribution to climate protection:
reduced ozone pollution and lower emissions
- ✓ conserve resources and materials: reduced application quantities
- ✓ positive contribution to health protection
- ✓ keeping up with the times: natural look due to reduced grain accentuation
- ✓ user-friendly processing times for two-component coatings
- ✓ easier storage



Why choose ADLER water-based coatings?

It's not only the reduction in VOCs that speaks out in favour of using ADLER water-based coatings. Over the past few years, ADLER has made significant investments in the area of Research & Development in order to improve the quality of their water-based paints and varnishes. Nowadays, ADLER's water-based coatings are not just of an equivalent quality to traditional solvent-based coatings – in some areas they are even superior.



Making the changeover easier!

Your ADLER field sales representative will be only too happy to offer you guidance with the changeover over to more sustainable and environmentally friendly painting and varnishing methods.

BE NATURAL

- With some of ADLER's water-based coatings, the solvent content is even less than 3 %, for example their Bluefin Pigmosoft
- ADLER's range includes some especially sustainable products, for example their Bluefin Terra-Diamond, which is manufactured from more than 85 % renewable and/or natural raw materials
- Our clear varnish Bluefin Unistar has zero VOCs and is emission- and solvent-free.

BE SMART

- ADLER offers single-component water-based coating systems that achieve the same level of durability as two-component PUR coatings
- New raw materials technologies make it possible to create extremely robust surfaces
- Extensive range: the perfect solution for any set of requirements!
- Smart products like the amazingly efficient Bluefin Smart and the self-regenerating Bluefin Pigmosoft

BE ADLER

- ADLER's name is a symbol of quality
- ADLER surfaces provide added value and deliver good sales arguments to convince your customers
- All water-based ADLER furniture varnishes are free from heavy metals, formaldehyde, biocides, fungicides and phthalate plasticizers
- ADLER avoids the use of toxins and carcinogenic substances such as T- and CMR substances.
- As a pioneer in the area of water-based coatings, ADLER has in-depth knowledge and many years of experience in this field

ADLER's coatings have gained certification from various European research and testing institutes. This also attests to ADLER's commitment to high-quality and environmentally friendly products.

Certifications & our sustainable label green

You will find details of the particular certifications that each product has been awarded in our product overview. An overview of the most important certifications:



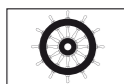
The world's most advanced standard for safe, circular and responsible materials and products. Cradle to Cradle Certified® products are thus the key to transforming the traditional linear economic model of production and consumption into a circular economy.



The Austrian Eco-label is an independent seal of approval for the environment and quality. The certificate indicates whether products have been manufactured in an environmentally friendly way or whether they can be used or disposed of in the most environmentally friendly way. Only selected ADLER products such as Bluefin Unistar are marked with the Austrian Eco-label.



Baubook is a database for building products that facilitates the use of healthy and environmentally friendly materials. It makes it easier to find evidence of the required credentials in the context of invitations to tender with a focus on ecological factors, when gaining certifications for buildings and in the context of support schemes, and it delivers validated and well-structured data on building materials for the calculation of energy and ecological indicators.



Paints and varnishes used for the interior fittings of ships must satisfy the requirements of the IMO Resolution A.653(16) with regard to low flammability. The testing methodology to assess how a material will behave in a fire situation is set out in our own testing standards; testing is carried out on an inert, non-combustible substrate.



French Directive DEVL1104875A on the labelling of paints and varnishes for the construction industry with regard to their emission of volatile harmful substances: A+



Products with this label meet at least one of the following standards:

- Resistance to Saliva and Perspiration (DIN 53160/1 and DIN 53160/2)
- Safety of toys (EN71-3 (CE)), suitable for use on children's toys



Slip-resistance ratings are awarded in accordance with the testing standard DIN 16165. The higher the rating, the better the slip-resistance tends to be. Slip-resistance ratings are allocated as follows: no slip-resistance rating, R9, R10, R11, R12, R13

ADLER green is the label used for the most sustainable coatings in the ADLER range. In line with the UN's Sustainable Development Goals, ADLER is pursuing a clear and consistent strategy for a responsible approach to business that is aligned with environmental and climate goals. All the products are objectively tested according to three categories: environment, health & safety and lifespan. Only products that perform well in all these areas are allowed to carry the "green" logo.



Environment

- high percentage of renewable raw materials
- low carbon footprint
- without the addition of substances that are damaging to the environment
- low VOC content



Health & Safety

- without the addition of allergens or substances that are hazardous to health
- use of the products does not present any health risk


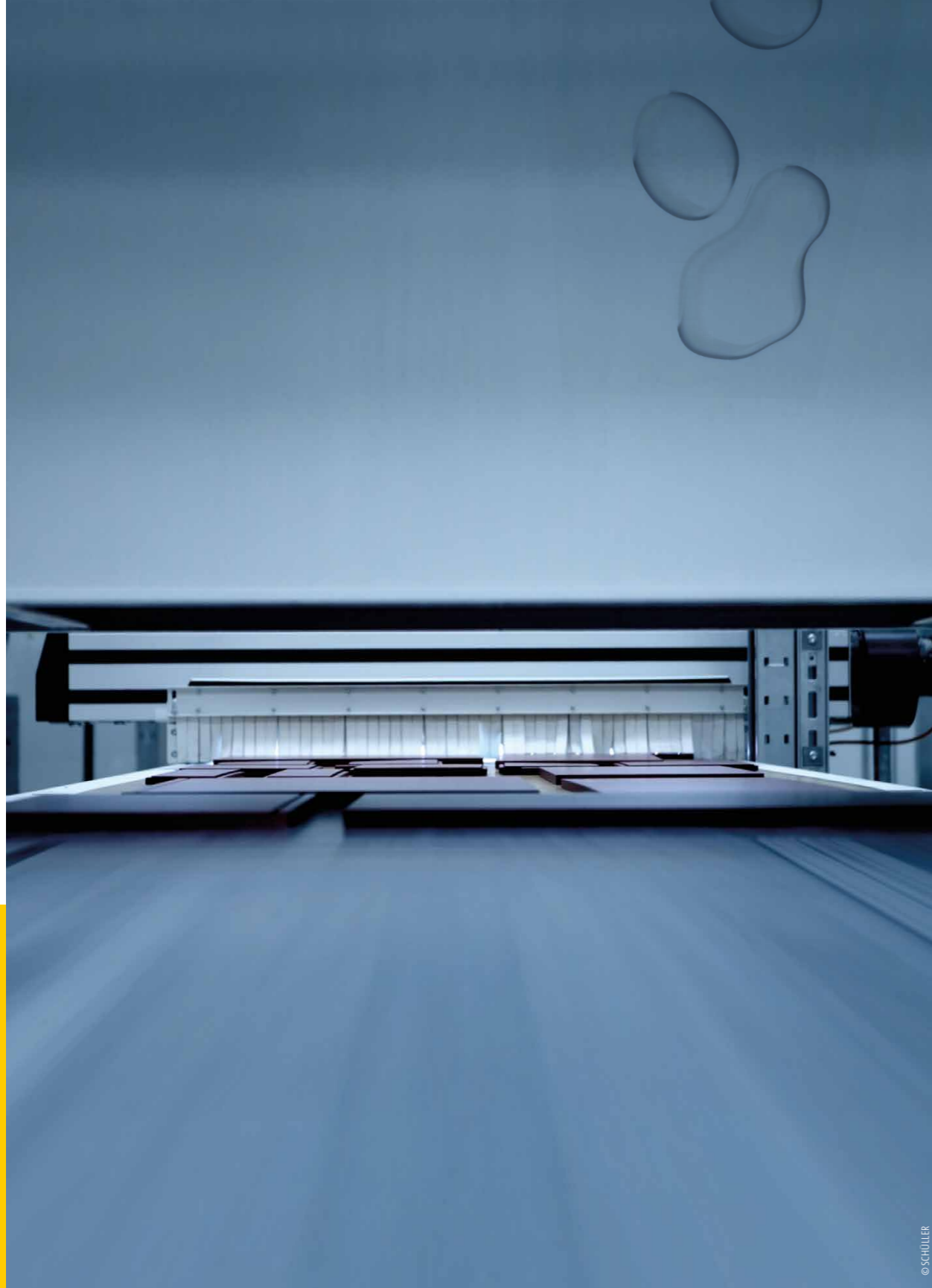


Service life

- long shelf life
- highly durable
- good colour stability



ADLER and their range of water-based coatings for furniture



ADLER has an especially broad portfolio of products for use on furniture. Whether you are looking for a single-component or a two-component solution, colourless or with pigment, matt or high gloss – it can all be done using a water base.

We have the perfect water-based coating for every set of requirements and every installation!

The high quality of ADLER's products is reflected in their ease of use and durability, as well as in the way they look and feel. Thanks to the company's continuous further development of the raw materials they use, some of ADLER's water-based furniture coatings even have special additional properties: anti-fingerprint protection, a pleasant soft-touch surface, the capacity for self-regeneration or more efficient methods of application.

Type of application	Product	Product no.*	Use	Your benefits at a glance	Grain	Degree of gloss	Chemical resistance	Drying	Tests and certifications	
CLEAR VARNISHES										
 	1C	Bluefin Resist	2963000105		all-rounder, as durable as a two-component PUR varnish		G05 – G90		 3h	
		Bluefin Ecofin Light	2951000105		open-pored surface, fast drying		G05 – G80		 1h	
	1C or 2C	Bluefin Ecofin	2953000105		easy to sand, very fast drying, only very minimal VOC content		G05 – G80		 1h	
		Bluefin Ecofin Plus	2955000105		very good filling performance, very fast drying, only very minimal VOC content		G10 – G100		 1h	
		Bluefin Unistar	2965000105		water-based clear varnish, suitable for universal use, VOC-free		G05 – G70		 2h	
		Bluefin Unistar Thix	2966000105		very fast drying, very good block resistance, VOC-free, outstanding stability on vertical surfaces		G05 – G70		 2h	
		Bluefin Step-Silent	2967000110		no creaking, non-slip, especially suitable for stairs		G10, G30, G50		 3h	
		Bluefin Top-Antiscratch	2960000105		outstanding scratch resistance, varnish-on-varnish & as a spray-on topcoat for pigmented paints, excellent chemical resistance		G05 – G50		 4h	
	2C	Bluefin Softmatt	3052000105		natural, deep matt feel-good surface, anti-fingerprint properties		G05		 5h	
		Bluefin Smart	2990000105		only one coat needed, velvety feel, like untreated wood		G05	**	 12h	
		Bluefin Pure-Wood	2980000105		looks & feels like untreated wood, made with a percentage of renewable raw materials		G05		 3h	
		Bluefin Terra-Diamond	2962000105		sustainable alternative: made from more than 85% renewable or natural raw materials, outstanding durability		G05 – G70		 4h	
		Bluefin Multilux OP	3850000105		OP = open-pore, especially beautiful pore pattern		G05 – G90		 3h	
	 	1C UV	Bluefin Multilux U	3851000105		U = suitable for universal use		G05 – G90		 3h
Bluefin Multilux HF			3852000110		HF = especially good filling performance		G10 – G90		 3h	
Bluefin Multilux TOP			3853000110		TOP = extremely durable, exceptional brilliance, attractive pore pattern		G10 – G90		 3h	
Bluefin Multilux Step			3881000110		Step = especially for stairs (creak-free), slip-resistant		G10, G30, G50		 3h	
Bluefin Multilux Gloss			3895000100		Gloss = high degree of shine	Topcoat	G100		 15 – 20 min	
Bluefin Multilux Softmatt			3854 000105		dull matt, pleasant feel, anti-fingerprint protection	Topcoat	G05		 15 – 20 min	
									depends on the parameters of the installation approximate figures as a guide: conveyor belt pallet dryer 35 – 45 min flat channel dryer 15 – 20 min	

* Reference product number
** except for bathrooms/kitchens

Type of application	Product	Product no.*	Use	Your benefits at a glance	Grain	Degree of gloss	Chemical resistance	Drying	Tests and certifications	Colour system	
PIGMENTED PAINTS											
 	2C	Bluefin Pigmosoft	3295000010	 	anti-scratch, anti-fingerprint, self-regenerating		Deep matt			 	
		Bluefin Pigmores 4in1	3501000010		outstanding durability, very good filling performance	G10, G30, G50			 		
	Bluefin Pigmores NXT	3507000010	resilient, extremely matt surface without excimer		approx. G04						
	1C	Bluefin Pigmocryl NG	3201000010		fast drying, highly resistant to marking by metal objects (e.g. rings)	G10, G30, G50			 		
 	2C UV	Pigmolux DC	3402009016	 	user-friendly, can be used with or without UV-curing		G20 – G50		depends on the parameters of the installation		
		Pigmolux HQ	3350000010		highly durable, extremely good stackability	G05 – G50					
		Pigmolux HQ NXT	3348007021		outstanding resistance to the formation of shiny marks and scratches	G04					
		Bluefin Pigmolux Gloss	3395000030		high gloss, very good results with polishing	Glossy					
PRIMERS											
 	2C	Bluefin Base HT	2916000200	 	water-based 2C primer with outstanding grain accentuation, can also be used as a filling primer for closed-pore surfaces						
		1C	Bluefin Jet-Base		2914000200	very fast drying, next coat can be applied after only a short time, very good filling performance, extremely easy to sand					
	1C UV	Bluefin Baselux	3810000200		very strong grain accentuation (as with solvent-based coatings), excellent pore wetting and insulating effect		depends on the parameters of the installation				
		Bluefin Baselux Natur	3811000200		muted grain accentuation, outstanding pore wetting performance and insulating effect						
FILLERS											
 	1C	Bluefin Rocketfill	3138050000	 	very good filling performance, can be applied directly onto MDF, extremely easy to sand				 		
	1C 2C	Bluefin Isospeed	3134000010		good filling performance and strong insulating effect with 2C use, available in a wide range of colours			 			
	1C UV	Aqualux Spritzfüller	3319050000		good filling performance, hardens quickly, outstanding adhesion		depends on the parameters of the installation				
	1C UV	Bluefin Pigmolux Filler	3320050000		single component, good filling performance, extremely easy to sand						

* Reference product number

Clear varnishes

WOOD IN ITS MOST NATURAL FORM



ADLER



BLUEFIN RESIST

Water-thinnable single-component clear varnish with outstanding mechanical and chemical resistance. This clear varnish is resistant to creams and grease and has excellent grain accentuation, transparency and filling performance. It contains a special UV filter that protects the surface against premature yellowing or fading.

- excellent chemical and mechanical resistance
- outstanding filling performance
- excellent grain accentuation
- excellent resistance to cream and grease
- excellent stability on vertical surfaces

Product no. 2963000105
Container 5 kg, 25 kg
Degree of gloss G05, G10, G30, G50, G70, G90

BLUEFIN ECOFIN FAMILY

The fastest water-thinnable furniture varnishes. Multi-coat varnish which is especially quick drying and has excellent stackability for use in industry.

- natural surface
- can be used directly on oak
- VOC content less than 3.0 %
- good resistance to chemicals and food
- excellent scratch resistance and will not form shiny areas even with dull matt gloss levels
- one- and two-component processable
- diverse range

Bluefin Ecofin Light 2951000105 gives a very natural, open-pore look

Bluefin Ecofin 2953000105 very wide range of uses, moderate filling performance,

Bluefin Ecofin Plus 2955000105 creates an especially full-bodied surface



Bluefin Ecofin



CLEAR VARNISHES



BLUEFIN UNISTAR & BLUEFIN UNISTAR THIX

Bluefin Unistar and Bluefin Unistar Thix can be used either as single-component products or as two-component products using the "varnish on varnish" method, and can be applied directly onto many types of wood, e.g. oak. Further plus points include rapid drying and good block resistance, as well as excellent filling performance, transparency and durability. Their VOC-free formulas make them especially environmentally friendly.

- universal application: 1C or 2C
- fast drying and stackable after only a short time
- outstanding filling performance and transparency
- excellent grain accentuation
- effectively protects wood from scratches & marks
- the ideal product for varnishing toys (EN 71-3)
- declared in baubook

Product no. 2965000105 | 2966000105
Container 4 kg, 22 kg, 120 kg
Degree of gloss G05, G10, G30, G50, G70
Hardener Aqua-Crosslinker 8481



BLUEFIN STEP-SILENT

Bluefin Step-Silent reduces creaking sounds on wooden stairs, creates a non-slip surface and can be used as either a 1C or a 2C varnish. Due to its improved resistance to wear-through and abrasion, Bluefin Step-Silent can withstand a high level of mechanical stress, even when used as a single-component product.

- no creaking sounds
- excellent abrasion resistance
- excellent stability on vertical surfaces
- outstanding chemical resistance
- can be used as a 1C or 2C product
- non-slip surface
- slip-resistance rating R9 in accordance with DIN 51130

Product no. 2967000110
Container 4 kg, 22 kg
Degree of gloss G10, G30, G50
Hardener Aqua-Hardener 8450

BLUEFIN TOP-ANTISCRATCH

Water-based, highly durable 2C topcoat for furniture surfaces where the best possible chemical resistance and outstanding scratch resistance are called for.

- excellent chemical resistance
- can be used as topcoat for surfaces coated with a pigmented paint or on wood using the varnish on varnish method
- very good mechanical resistance
- gives pigmented coating systems very good resistance to ring marking
- non-yellowing

Product no. 2960000105
Container 4 kg, 20 kg
Degree of gloss G05, G10, G30, G50
Hardener Aqua-Hardener 8451

BLUEFIN SOFTMATT

Bluefin Softmatt can be used universally as a multi-coat varnish or topcoat in settings where you are looking for a particularly natural, deep matt, feel-good finish. Whatever angle you view it from, the surface always looks uniform with a consistently deep matt gloss level – without any annoying marks thanks to the anti-fingerprint properties of the coating.

- can be used as a topcoat, but also varnish-on-varnish
- outstanding all-round properties
- deep matt, warm feel-good finish with exquisite, silky soft feel
- very uniform matt finish
- very natural pore pattern
- anti-fingerprint properties

Product no. 3052000105
Container 4 kg, 20 kg
Hardener Aqua-Hardener 8451



CLEAR VARNISHES



BLUEFIN SMART

Our innovative furniture varnish Bluefin Smart is paving the way for a completely new type of surface treatment – with just one spray application followed by sanding to create a smooth surface, and you're done. This "smart" companion saves the user both time and money. As well as being very efficient to use, this clear varnish, with its dull matt look and velvety feel, creates natural-looking items of furniture in no time at all.

- Saves time and money: one coat and you're done
- natural-looking surface
- dull matt look with velvety feel
- will not form shiny areas
- low emissions: VOC content less than 3 %
- very good mechanical resistance
- provides optimum protection against scratches

Product no. 2990000105
Container 4 kg, 20 kg
Hardener Aqua-Hardener 8451

BLUEFIN PURE-WOOD

Water-based 2C furniture varnish, ideal for achieving an untreated look and feel on wooden surfaces. With a percentage of renewable raw materials, this varnish preserves the natural beauty of the wood and ensures an eco-friendly living environment.

- efficient and straightforward to use, especially on porous hardwoods (e.g. oak, walnut)
- only small quantities required per application
- quick drying
- reliable protection against marks and scratches

Product no. 2980000105
Container 4 kg, 10 kg, 22 kg
Hardener Aqua-Hardener 8450

BLUEFIN TERRA-DIAMOND

The water-based 2C furniture varnish Bluefin Terra-Diamond is made from more than 85 % renewable or natural raw materials. The excellent surface protection it provides, its ease of use and absolute fitness for purpose clearly demonstrate that Bluefin Terra-Diamond is in no way inferior to conventional varnishes.

- 85 % natural raw materials
- Low VOC content (under 6 %)
- 31 % fewer CO₂ emissions
- perspiration and saliva-resistant (DIN 53160)
- no heavy metals (EN 71-3)
- very good chemical resistance
- complete cream and grease resistance
- extremely scratch resistant

Product no. 2962000105
Container 4 kg, 20 kg
Degree of gloss G05, G10, G30, G50, G70
Hardener Aqua-Hardener 8451



BLUEFIN MULTILUX FAMILY

These water-based UV varnishes have been specially developed to meet the demanding requirements of kitchen and bathroom furniture, as well as surfaces in furniture and interior finishing that are subject to heavy use.

- very good mechanical and chemical resistance
- excellent stability on vertical surfaces
- very good stackability
- Suitable for use on toys, resistant to perspiration and saliva

Bluefin Multilux OP 3850000105 excellent pore pattern

Bluefin Multilux U 3851000105 suitable for universal use

Bluefin Multilux HF 3852000110 high filling performance

Bluefin Multilux Top 3853000110 top quality, outstanding chemical resistance

Bluefin Multilux Step 3881000110 especially for stairs (creak-free)

Bluefin Multilux Gloss 3895000100 perfect, high-gloss finish

Bluefin Multilux Softmatt 3854000105 dull matt, velvety soft, anti-fingerprint properties

Pigmented paints

FOR MORE DIVERSITY



ADLER



BLUEFIN PIGMO SOFT

Bluefin Pigmosoft offers a clear advantage over other matt paints with its innovative self-regenerative properties, which protect the surface from developing shiny areas and allow it to regenerate automatically in the case of heavy wear. Fingerprints can be almost completely avoided thanks to its special anti-fingerprint protection.

- dull matt look with velvety feel
- water-based 2C pigment paint
- innovative self-regenerative properties
- very good resistance to scratches and marking by metal objects (e.g. rings).
- excellent resistance to formation of shiny areas
- anti-fingerprint protection
- great coverage and resistance to light
- available in all RAL and NCS colours

Product no. 3295000010
Container 4 kg, 20 kg
Hardener Aqua-Hardener 8451



BLUEFIN PIGMORES 4IN1

Modern, water-based 2C pigmented paint with excellent properties. Bluefin Pigmares 4in1 is very straightforward and simple to use and at the same time provides good filling performance and is easy to sand.

- water-based 2C pigment paint
- very good filling performance and extremely easy to sand
- high chemical and mechanical resistance
- extremely good resistance to marking by metal objects (e.g. rings)
- can be used directly on MDF boards
- free of organotins, low VOC emissions
- large colour palette
- also available as a textured paint

Product no. 3501000010
Container 4 kg, 22 kg
Degree of gloss G10, G30, G50
Hardener Aqua-Hardener 8452





Studio Kevin Weiß



Gwimer



Schüller Möbelwerk KG



PIGMENTED PAINTS



BLUEFIN PIGMORES NXT

The NXT quality complements the other well-established products in the water-based Pigmores 4in1 range, delivering outstanding durability for furniture, kitchens, interior doors, chairs and more besides, even in extremely matt gloss levels (approx. G04).

- water-based 2C pigmented paint (topcoat)
- dull matt surface and a smooth feel
- high chemical and mechanical resistance
- anti-fingerprint properties
- low VOC content
- wide range of colours, can be tinted with ADLER | Mix

Product no.	3507000010
Colours	RAL, NCS and other shades on request
Container	4 kg, 20 kg
Degree of gloss	G4
Hardener	Aqua-Hardener 8452

BLUEFIN PIGMOCRYL NG

Water-based 1-component pigment paint with quick drying and good mechanical and chemical resistance. This coloured paint can be tinted to create any NCS or RAL colour and gives excellent coverage.

- quick drying
- highly block-resistant
- excellent coverage
- wide variety of colours
- good resistance to mechanical and chemical stress and to the effects of light

Product no.	3201000010
Container	1 kg, 4 kg, 22 kg
Degree of gloss	G10, G30, G50
Standard colours	Weiß (white) W10, RAL 9010, Schwarz (black)

BLUEFIN PIGMOLUX FAMILY

The Bluefin Pigmolux Family brings you efficiency, speed and great aesthetics. Thanks to their premium-quality properties, this family of paints are among the most user-friendly high-performance UV paints on the market.

- exceptional durability
- high opacity
- colour shade accuracy
- good stackability

Pigmolux DC 3402009016	very wide range of uses
Pigmolux HQ 3350000010	speed, hardness, durability, exceptionally good stackability
Pigmolux Gloss 3395000030	high-gloss finish, brilliant colours and very good results with polishing
Pigmolux HQ NXT 3395000030	deep matt finish, soft feel, very good resistance to scratches and the formation of shiny areas



Primers



ADLER

BLUEFIN BASE HT

Water-based 2C primer with excellent transparency and grain accentuation. The outstanding insulating effect prevents the activation of water-soluble substances in the wood, e.g. with larch. A special UV filter gives protection against yellowing and fading. Ideal for use as a topcoat for water-based furniture varnishes such as Bluefin Top-Antiscratch and Bluefin Unistar.

- excellent grain accentuation
- excellent transparency
- lasting protection against yellowing
- can also be used as a filling primer for closed-pore coating systems

Product no. 2916000200
Container 4 kg, 20 kg

BLUEFIN JET-BASE

Water-based, transparent 1C base coat. Particularly suitable for coating jobs where production requirements dictate that the surface needs to be ready for the next coat after only a short time.

- very fast drying
- very good filling performance
- extremely easy to sand

Product no. 2914000200
Container 25 kg



PRIMERS

BLUEFIN BASELUX & BLUEFIN BASELUX NATUR

UV-curing furniture primer for industrial and professional use. Specially formulated for use as a basecoat for Bluefin Multilux U, OP, HF and Top.

To preserve the natural colour of the wood, use Bluefin Baselux Natur.

- very easy to sand
- excellent stability on vertical surfaces
- good filling performance
- excellent grain accentuation
- can be used directly on oak surfaces

Product no. Bluefin Baselux 3810000200
Bluefin Baselux Natur 3811000200

Container 25 kg
further sizes available on request

Fillers

BLUEFIN ROCKETFILL

Single-component spray filler for surfaces on furniture and interior fittings that have been painted with water-based pigment paint.

- very good filling performance and easy to sand
- hardens quickly
- can be used directly on MDF boards, very little roughening of fibres

Product no. 3138000010
Container 25 kg
further sizes available on request

BLUEFIN ISOSPEED

Opaque spray filler, available in the full range of RAL colours; can be used either as a single-component or a two-component product.

- very good stability
- quick drying
- extremely easy to sand
- very good insulating properties with 2C use and can be applied directly onto MDF boards

Product no. 3134000010
Container 4 kg, 22 kg
Hardener Aqua-Hardener 8450





FILLERS

AQUALUX SPRITZFÜLLER

This UV-curing 2C spray filler is suitable for all water-based pigmented paint systems as insulation for types of wood that contain water-soluble active substances.

- very good filling performance and easy to sand
- hardens quickly
- excellent insulating properties
- good adhesion & insulating effect on any substrate, also insulates against water-soluble substances in the wood that may leak colour, for example with ash

Product no. 3319050000
Container 25 kg, 120 kg
 further sizes available on request
Hardener Aqua-Hardener 8450

BLUEFIN PIGMOLUX FILLER

A water-based, UV-curing single-component spray filler which causes only very minimal swelling of fibres in MDF and HDF.

- very good filling performance and easy to sand
- hardens quickly
- can be used directly on MDF boards

Product no. 3320000010
Container 25 kg
 further sizes available on request

The demands of the future

Innovative companies are taking their responsibility for the environment and towards society seriously and are already today putting in place the required measures for sustainability and environmental protection.

The benefits to you at a glance...

- ✓ You will be fulfilling the statutory requirements and be better prepared for the new demands of the market:
 - Directive 2004/42/EU (Guidelines for Decorative Paints & Varnishes)
 - VOC Systems Directive (VAV) in Austria, BGBl II 301/2002
 - 31st Federal Emissions Control Directive (BlmSchV) in Germany, BGBl I 2001, 2180
- ✓ You will be focused on the future and showing your innovative strength
- ✓ Water-based paints and varnishes convey a positive image
- ✓ You can offer your customers high-quality, environmentally friendly products
- ✓ You can cut costs and save on resources
- ✓ You are taking on responsibility on behalf of future generations

As well as having the right paint or varnish, it's also crucial that you have the right tools. ADLER's range of professional equipment, specially designed for use with our products, will help to ensure that you achieve the best possible results.



CATALOGUE
 ADLER professional accessories





In unseren Adern fließt Farbe.

Vor 90 Jahren hat Johann Berghofer den Grundstein für ADLER gelegt und begonnen, eigene Lacke zu entwickeln. Vieles hat sich seit dieser Zeit verändert, doch eines ist gleich geblieben: Unsere Begeisterung für Farbe, die uns Tag für Tag antreibt, an der perfekten Oberflächenbeschichtung zu arbeiten.

Der Lack liegt uns im Blut – in unseren Adern fließt Farbe.



facebook.com/adlerlacke



instagram.com/adlerlacke_official



youtube.com/@AdlerLacke

ADLER-LACKE.COM

ADLER-Werk Lackfabrik · Johann Berghofer GmbH & Co KG
Bergwerkstraße 22 · A-6130 Schwaz/Tirol
T. +43 5242 6922-0 · info@adler-lacke.com

ADLER Deutschland GmbH · Kunstmühlstr. 14 · D-83026 Rosenheim · T. +49 8031 304 5174
ADLER Lack AG · Etzelstraße 5 · CH-8856 Tuggen · T. +41 55 465 2121
ADLER Italia S.r.l. · Via per Marco 12/D · I-38068 Rovereto · T. +39 0464 425 308
ADLER Polska Sp. z o.o. · ul. Tyniecka 229 · PL-30-376 Kraków · T. +48 12 252 4001
ADLER Česko s.r.o. · Jihlavská 770/27 · CZ-664 41 Troubsko · T. +420 731 725 957
ADLER Slovensko s.r.o. · Montážna 3 · SK-971 01 Prievidza · T. +421 46 5199 621
ADLER Benelux BV · De Boelakkers 12 · NL-5591 RA Heeze · T. +31 85 064 2020



07-2025 | 894100070201